

**1. DOOR & MOLDING STYLE CHOICE**  
 06 Wyndham Hill       11 Pendelton     17 Mill Creek  
 20 Barrington       33 Coventry     44 Brighton Harbour  
 51 American Traditions     54 Horizons     65 Harmony

**2. WOOD CHOICE**  
 Cherry    Maple    Oak    Quarter sawn Oak

**3. FINISH** Refer to store kiosk for finish colors.  
 Stain    Glazed Finish    Glazed Finish with Olde World Distressing  
 Passages Handrubbed Finish    Paint  
 Finish Name: \_\_\_\_\_

**4. DISTRESSING**  
 No Distressing  
 Distressing (random nicks & dents and wear sanded edges prior to finish)  
 Antique Detailing (random nicks, dents, wear sanded edges prior to finish, rasp marks, and worm holes)  
 included with Olde World or Passages finish selection above:  
 Olde World Distressing (random nicks, dents, wear sanded edges prior to finish, rasp marks, worm holes, gouges and glaze)  
 Passages Handrubbed Finish Distressing (random nicks, dents, wear sanded edges prior to finish, rasp marks, and worm holes)

**5. LACQUER**  
 Satin Lacquer    Flat Lacquer

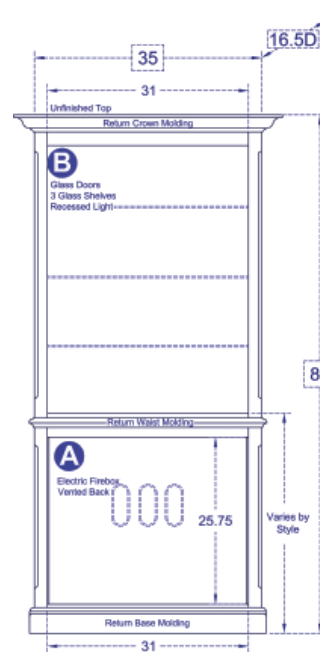
**6. HARDWARE**  
 Number: \_\_\_\_\_ Description: \_\_\_\_\_

**7. GLASS**  
 None    Plain    Antique    Beveled    Brass Bevel Lead    Frosted  
 Lead    Mission Lead    Seeded    Straw    Wood Grills

**8. MOLDING**  
 The Custom Shoppe will complete moldings between cabinets. Describe ends of grouping.  
 Molding on outside edges    No molding on outside edges  
 Other, describe: \_\_\_\_\_



(51) American Traditions shown, over for other styles



**STANDARD DIMENSIONS AND CUSTOM CAPABILITIES**

<b>MINIMUM:</b>	70H	35W	14D
<b>STANDARD:</b>	80.0H	35.0W	16.5D
<b>MAXIMUM:</b>	83.9375H (96H)	35W	24.5D

**DIMENSIONS**

Review the standard cabinet dimensions above and note any changes required within minimum and maximum dimensions (fees apply) to accommodate your TV, components or wall.

**OPTIONAL FEATURES**

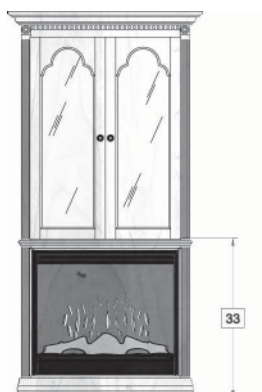
Extra shelves? Legs? Lighting? Cord Holes? Add or remove features for design ideas and storage needs.

**ANYTHING ELSE?**

Is there something you need, that you cant find in our literature - write your ideas and questions here.



**WU0660**  
36.8125W | 38.625W



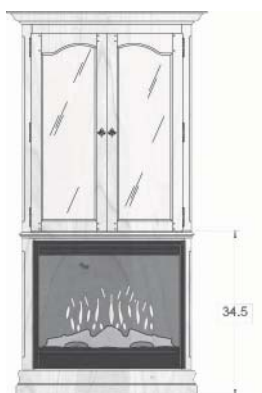
**WU1160**  
37.75W | 40.5W



**WU1760**  
36.625W | 38.25W



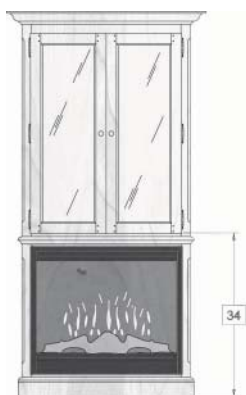
**WU2060**  
37.1875W | 39.375W



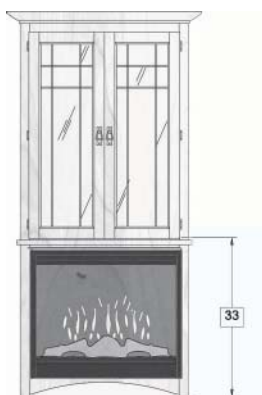
**WU3360**  
38.0625W | 41.125W



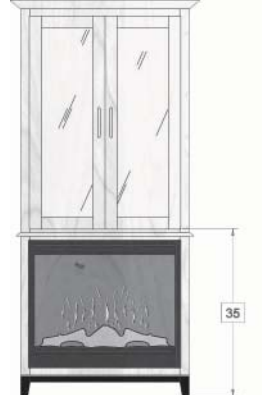
**WU4460**  
38.0625W | 41.125W



**WU5160**  
38.0625W | 41.125W



**WU5460**  
37.8125W | 40.625W



**WU6560**  
37.125W | 39.25W  
Optional Metro Legs: CAPL50 82.5H